



DOWNLIGHTS

HALUX 2\"ROUND

DOWNLIGHTS

DOLUX SURFACE IP65
1 TC-D CFL / HID



SPECIFICATIONS :

Mounting	: Ceiling mounted
Lamp type	: CFL/HIT-CE
Lamp holder	: G24q/G12
Control gear type	: Electronic/Conventional
Voltage Rating/ Freq.	: 220-240V / 50-60 Hz
Power factor	: >0.95
Degree of protection	: IP 65
Internal Wiring	: 0.5 mm sq. solid copper wire PVC 105 deg C
Cable entry	: 16mm dia. holes at the bottom of the housing
Cable connection	: Terminal block, 3-pole, screw type with grounding
Conformity	: IEC 60598 / SASO 1318
Light controller	: CTG

DESCRIPTIONS : DOLUX 8" Surface is a surface mounted luminaire of high pressure die casted aluminium finished with 3-stages pretreatment electrostatic powder coating. It offers complete protection from dust and jetting water. The aluminum optic is used with purity higher than 99% and reflectance higher than 80% for high LOR. Many Optic solutions give different distribution shapes. Energy efficiency is obtained using an electronic ballast with PF higher than 0.95.

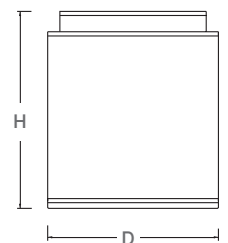
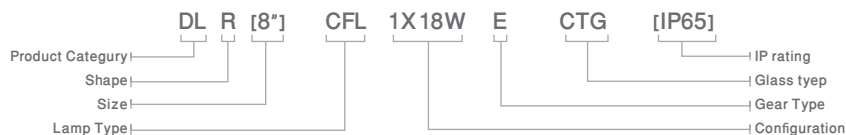
APPLICATIONS : Stairs, corridors , concrete ceiling, multi-purposes halls and outdoor applications.

CODE	D	H	CODE	D	H
DLR-[8"]-CFL-1X18WE-F/CTG [IP65]	180	301	DLR-[8"]-MH-70W-CON/CTG [IP65]	180	301
DLR-[8"]-CFL-1X26WE-F/CTG [IP65]	180	301	DLR-[8"]-MH-150W-CON/CTG [IP65]	180	301

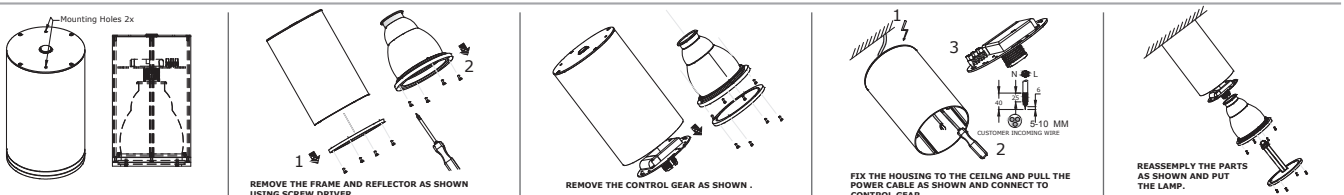
OPTIONS:

- Gear (DIM) only for CFL versions
- Emergency Kit (EM1.5) (EM3) only for CFL versions
- Trim Color (WH) (BR) (CR) (AU) (NI) (SI)

Ordering Example



Mounting System



Head office

Malaz - Salahidin Road
P.O Box 1246 Riyadh 11431

Tel : +966 11 477 77 00
Fax: +966 11 478 94 69

Western Region Office

Tahliya Street
P.O Box 20798 Jeddah 21465

Tel : +966 12 6650888
Fax: +966 12 6633413

Eastern Region Office

King Abdulaziz Street
P.O Box 8492 Dammam 31482

Tel : +966 13 8336509
Fax: +966 13 8329065

ContactUs@noortek.com



www.noortek.com